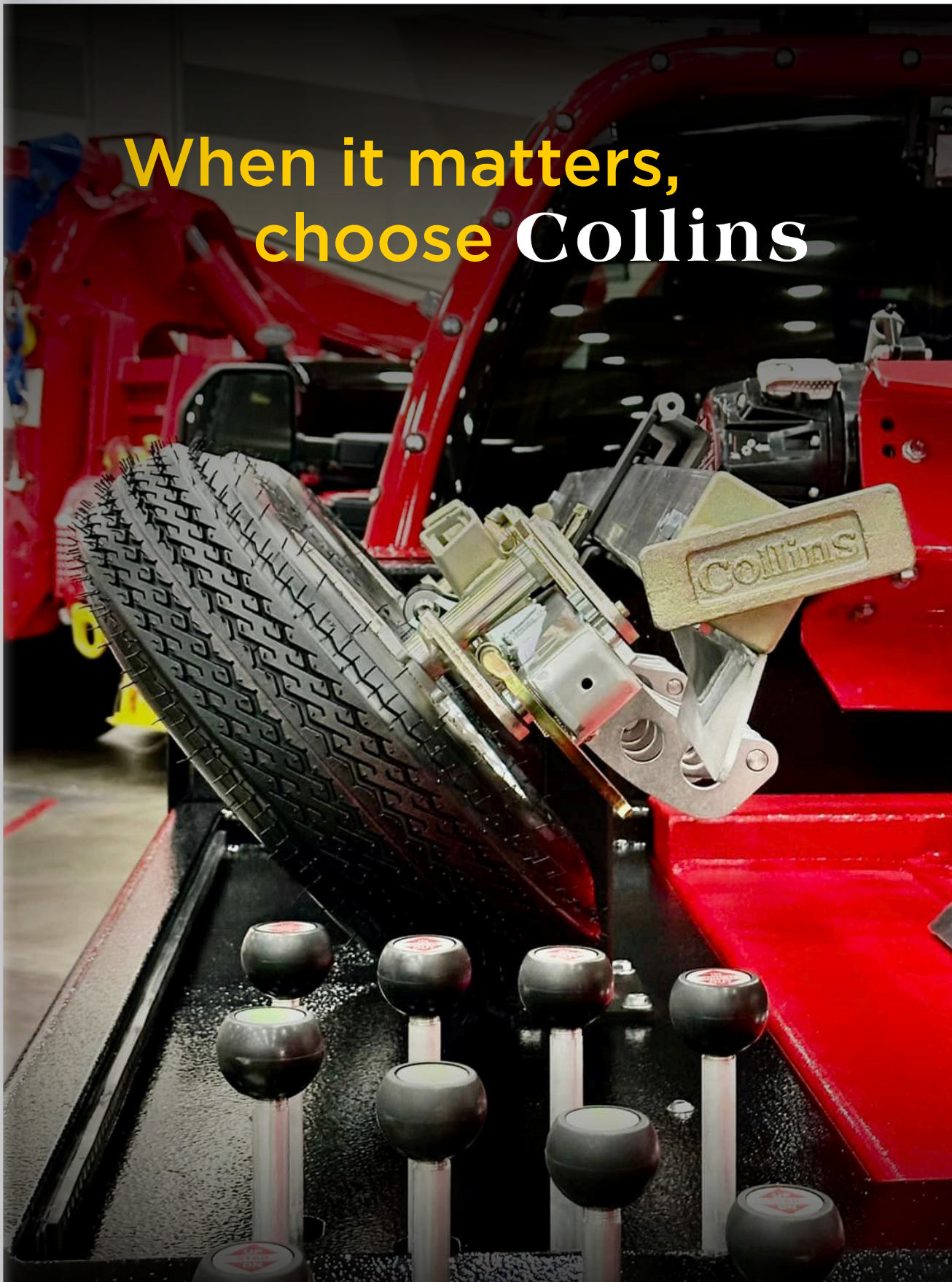


When it matters,
choose Collins



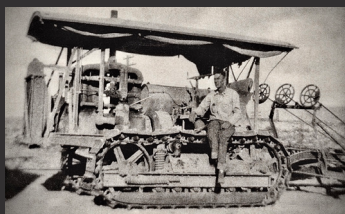


When it matters, choose Collins

At Collins, our philosophies and priorities revolve around adding value to our customers, the industry, and our team. We seek to enrich the communities around

us through safety, quality, advanced designs, personal customer service, and doing what's right. In our nearly 40-year association with Miller Industries, we have sought to support the towing industry by providing state-of-the-art towing equipment like the Hi-Speed® Dolly, the Carrier Dolly System, truck organization and towing accessories.

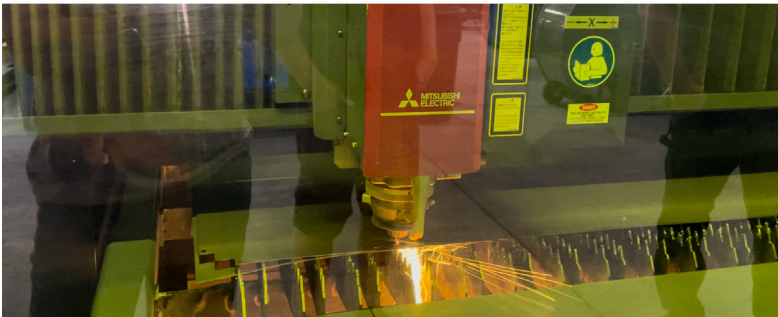
The history of Collins commenced with M.M. Hassell, the



M.M Hassell -- 1930's on Route 66

father of Collins Hassell, who settled his family of eight in the small village of Bluewater, New Mexico. As a certified mechanic in the early 1930's, Hassell senior was sought after to work on the famous Route 66 that ran 2,448 miles through eight states, (including New Mexico), from Santa Monica, California to Chicago, Illinois. Throughout his career, he was always involved in heavy equipment, logging, or trucking—in one form or another—from repairing them, to operating them, to driving them.

As was customary of the time, fathers typically passed their vocation onto their sons. All four of Hassell's sons eventually centered their livelihoods around heavy equipment, logging, manufacturing, and long-haul trucking. Collins Hassell was extensively involved in all of these. Having logged with their father for many years in Colorado,



New Mexico, Arizona, and Oregon, Collins and his younger brother Ray Hassell identified a need for improved logging equipment. The humble beginnings of Hassell Fabrication started in 1954, in a barn behind Collins' Ashland residence.



1952 Collins' First tandem-axle Truck

The fledgling operation was later moved across from Ashland's airport in Oregon, where it continues to operate today. Throughout the 1950s and 60's, the two brothers produced advanced stakes and log bunks for the Northwest timber

industry. It was during this time that Collins left the company to his brother Ray to start another manufacturing business. Collins Manufacturing was founded in August of 1972 when Charlie Nowell partnered with Collins Hassell to develop the world's first articulating tow-truck dolly. It had four 8" pneumatic Goodyear tires on 5" wheels, which lifted each vehicle tire off the ground. The Collins Dolly acted as both jack *and* dolly by means of simple leverage. By adjusting the dolly to fit around the vehicle tire with the telescopic dolly frame, a person could then use their own weight as leverage on the end of a 5' pry bar to quickly lift a vehicle with the dolly itself. A dolly tow could be ready to go in less than a minute. In the early 1970's, all of this was quite revolutionary. By introducing an articulating dolly that both lifted *and* hauled vehicles, Collins changed the towing industry forever. 🚚

That first-generation dolly set the stage that would see the design, development, and manufacturing of the first Self-Loading (SL) dollies just three years later, after which Charlie would leave for other ventures. Collins Hassell continued innovating. His years of experience in trucking, designing, and manufacturing equipment that required the hauling of tens of thousands of pounds long distances, from forest-to-mill, across rough logging roads – was the same DNA for creating the future Collins Hi-Speed® Dolly.



Loaded Log Truck outfitted with Hassell Stakes and Bunks

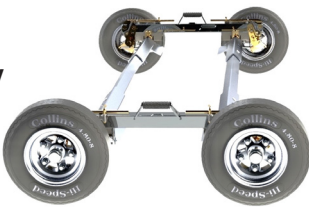
Now, towed vehicles could be moved safer, easier and further with the Collins Hi-Speed® Dolly, which in the 50-plus years since, has been the preferred choice of towing professionals. As vehicles today advance in design and technology, (EVs, hybrids, all-wheel drive, electronic parking brake systems), Collins Dollies are still a critical tool that helps support and enhance the essential work that professional towing and recovery operators do to safely and effectively tow or recover vehicles.

Collins Dollies support and honor these professional operators who, because of the nature of the job, often do what others can't and go where others won't.

"The goal is to have all our products at the highest level, in terms of safety, quality, functionality, and aesthetics. Safety truly is first and foremost ahead of everything else we do in our product designs."

Curtis Collins Hassell, CEO & President.

Collins G7 Hi-Speed® Dolly



Hi-Speed® Dolly - The Collins Hi-Speed® Dolly has evolved significantly from the first generation in 1972 to its seventh generation 50 years later in 2022. Distinct features of the Collins Hi-Speed® Dolly: 1) Secondary Safety features; 2) Freeway approved—rated for both long distance and freeway/highway speeds; 3) Requires only one truck and driver to safely transport the vehicle; 4) Lightest in weight with the greatest load capacity; 5) Quickest and easiest to use with automatic locking features; 6) Widest cross rail span for larger vehicles up to 104" and a true, positive-camber center; 7) Two-Tone zinc-plated finish as standard for additional corrosion protection. The new 7th-generation G7 Hi-Speed® Dolly adds 36 advancements.



Carrier Dolly - The Collins Carrier Dolly, (though similar in appearance to the 1st-generation highway dolly), serves a slightly different purpose. It is used on carrier or flatbed tow trucks to load and unload vehicles without risking damage by allowing the vehicle to roll on and off the deck. Prior to this, vehicles would have to be skated or dragged up onto the truck by the winch hook connected somewhere on the vehicle with a greater potential for damage, difficulty and concerned customers. In contrast, the winch hook connects to the Collins Carrier Dolly and the vehicle rides on the dollies. This also simplifies and standardizes the loading and unloading procedure no matter the vehicle—especially EVs, hybrids, vehicles with all wheel drive, and those locked up with the electronic parking brakes. The same Carrier Dolly unit, set up in a different configuration, can also be used for quickly loading and unloading motorcycles by a single operator and again, with less risk of damage to the motorcycle.

Truck Boxes - For over 30 years, Collins has designed and built an array of truck boxes: Tunnel boxes, to expand the available storage on a wrecker body, and Underbody boxes for



Collins Tunnel Boxes--Designed and Custom Built Since 1992



Collins Carrier Dollies for both Vehicles and Motorcycles



17 Hours
Distanced Towed: 1,021 miles
,240 lbs on Collins Hi-Speed Dollies



essential storage on a flatbed/carrier tow truck. These boxes have ranged in size, door styles, and materials (steel or aluminum). In each case, careful attention is given to create a robust box that holds up to the rigors of towing while refined in style to compliment the truck and body itself. The latest box project is a joint development with Jeff Cross to revamp his Streamliner Box — first made popular over 10 years ago — and is quickly recognized as the best underbody box ever built. As a manufacturer and supply partner with Miller Industries for over 40 years, Collins is committed to continuing to improve, develop, and advance our products, enhance the user experience, and keep pace with growing demand. Today, Collins Manufacturing utilizes state-of-the-art equipment and cutting-edge techniques, including CNC Fiber Laser cutting, CNC tube cutting, CNC high-precision press brakes, CNC multi-axis milling, CNC multi-axis lathe turning, automatic drilling, and machining. Our skilled craftsman in manual welding take pride in ensuring quality, while our precise repeatability in robotic welding, in-house powder coating, and world-class designs are unrivaled.

We have participated in historical and industry-recognized testing to ensure the efficacy of our products, such as the HORIBA MIRA proving grounds in the UK, the GM proving grounds in the US, as well as decades of successful in-house, and grueling real-world field testing. Collins' partnership with Miller Industries continues across a global market with Collins supplying dealers on almost every continent, with self-loading dollies found on Miller Industries light-duty wrecker and car-carrier trucks.

"We appreciate our partners and customers and wouldn't be around for this long without them. With our excellent team at Collins Manufacturing, who are also putting their names into a great product, we plan to be here many more decades serving our customers."

Chris Usher, General Manager.

Collins
collinsdollies.com



Collins

collinsdollies.com

PRODUCED BY NORTH AMERICA OUTLOOK MAGAZINE